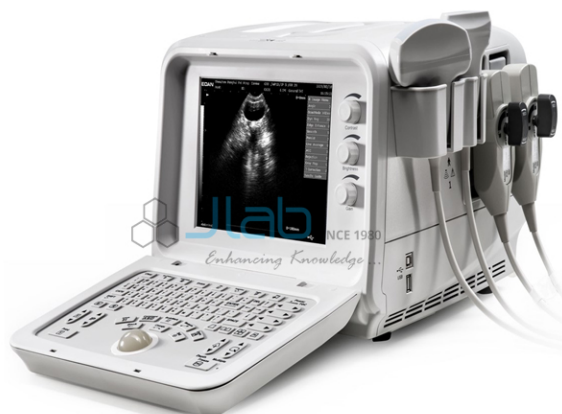


**Product Code . JL-USM-4017**

## Ultrasonic Diagnostic Imaging Systems



### Description

#### Ultrasonic Diagnostic Imaging Systems

Imaging Mode	B, B+B, B+M, M
Scanning Mode	Electronic convex, electronic linear
Gray Scale	256
Display	10" high resolution non-interlaced monitor
Probe Frequency	2.5-7.5MHz
Multi-frequency probe	Available
Scanning Depth	200mm
Zoom Function	Write and read zoom, 2 times max.
Colour-coded display	7 colours selectable
Power Supply	220±10%, 50Hz, 50VA
Dimension	353mmx315mmx253mm
Net Weight	11.5Kg (convex probe inclusive)
Standard configuration	Main unit including 10" high resolution monitor + 1 probe 3.5 MHz
Technical Data	
Power Supply	Nominal 415 at. 0.5 W powerline resistance 50/60 Hz.
Output	300m A and 100/125kvp. [24Kw as per 15 7620-1986]
Fluoroscopy	40Kv to 100Kv in 8 steps
Radiography	40Kv to 115 Kv in 8 steps.
	0Kv to 10Kv in 6 steps.
	On large focus 100, 200, 300mA.
Timer	10ms to 5s in 23 steps
X-ray Tube	Single Tube/Double Tube Compatible with

	BELDRA-1-125/20/40/Equivalent imported tubes with higher rating.
--	------------------------------------------------------------------