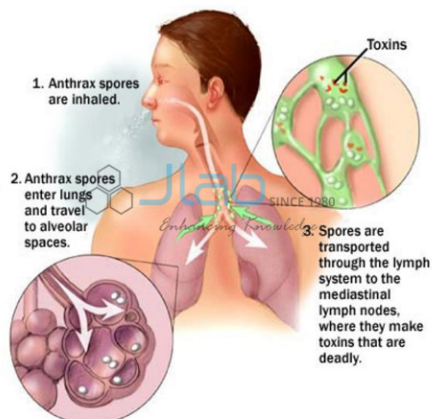


Product Code . JL-BE-6183

Bacillus Species Anthrax Model



Description

Bacillus Species Anthrax Model

Wool sorters disease

Anthrax spores or organism entering in the respiratory tract produce anthrax pneumonia

It begins as a mild respiratory infection , then develops in to respiratory distress and cyanosis.

The sputum is hemorrhagic toxaemia is severe & death occurs within 2-3 hrs Gastrointestinal anthrax

This develops 2-5 days after the ingestion of contaminated milk or meat

Characterized by fever, abdominal pain, hematemesis rarely diarrhea.

Toxaemia can occur

Bacillus Species Anthrax Model India, Manufacturers, Suppliers & Exporters in India, buy Bacillus Species Anthrax Model, buy Bacillus Species Anthrax Model Online India.

Contact JLab Export for your Educational School Science Lab Equipments. We are best school lab equipment supplier, school lab equipments, school lab equipments export, school lab equipments exporter, school lab equipments manufacturers, school lab equipments manufacturers in india.

{ "@context": "http://schema.org/", "@type": "Product", "name": "Bacillus Species Anthrax Model", "image": "https://www.jlabexport.com/images/catalog/product/609469113bacillus-species-anthrax-

model.jpg", "description": "Bacillus Species Anthrax Model Wool sorters disease Anthrax spores or organism entering in the respiratory tract produce anthrax pneumonia It begins as a mild respiratory infection , then develops in to respiratory distress and cyanosis. The sputum is hemorrhagic toxaemia is severe & death occurs within 2-3 hrs Gastrointestinal anthrax This develops 2-5 days after the ingestion of contaminated milk or meat Characterized by fever, abdominal pain, hematemesis rarely diarrhea. Toxaemia can occur Bacillus Species Anthrax Model India, Manufacturers, Suppliers & Exporters in India, buy Bacillus Species Anthrax Model, buy Bacillus Species Anthrax Model Online India.", "brand": "Jlab Export", "sku": "5", "gtin8": "5", "gtin13": "5", "gtin14": "5", "mpn": "5", "aggregateRating": { "@type": "AggregateRating", "ratingValue": "5", "bestRating": "5", "worstRating": "0", "ratingCount": "5" } }
