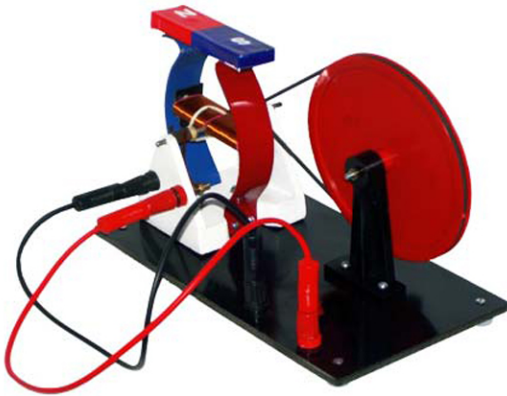


Product Code . JL-ETE-7702

Demonstration Dynamo Model



Description

Demonstration Dynamo Model

The model may also be used as a motor on 6-8 V DC supply.

It is coupled to the smaller dynamo pulley by a rubber belt to give a step-up ratio.

Electrical output is via a pair of 4 mm sockets and a lamp is provided as a simple output indicator.

This Model uses the same basic assembly as Demonstration Electric Motor except it is mounted on a base plate (230 x 90 mm) which also carries a hand-drive pulley of 120 mm diameter.
